



# ESD122

## 1.2T Electric Wakie Straddle Stacker

- Adjustable straddle-outrigger design
- Maintenance-free batteries with integrated charger
- Strong chassis and rigid mast
- Easy operation

**EP EQUIPMENT CO.,LTD**  
[www.ep-ep.com](http://www.ep-ep.com)

## FEATURES



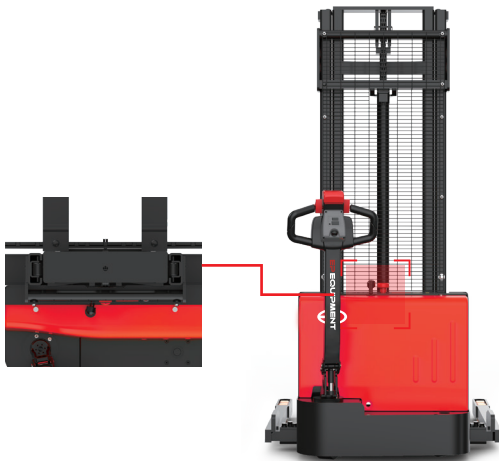
### ■ Adjustable straddle-outrigger design

ESD122 adopts adjustable straddle-outrigger design to stack various kinds of pallets, making it a perfect tool to cover multi handling tasks in warehouses. The forks of ESD122 is able to go very close to the ground and move right under the pallets without the bottom boards getting in the way. Operators are able to stack various sized pallets and reduce the leg span for efficient storage in a limited space.



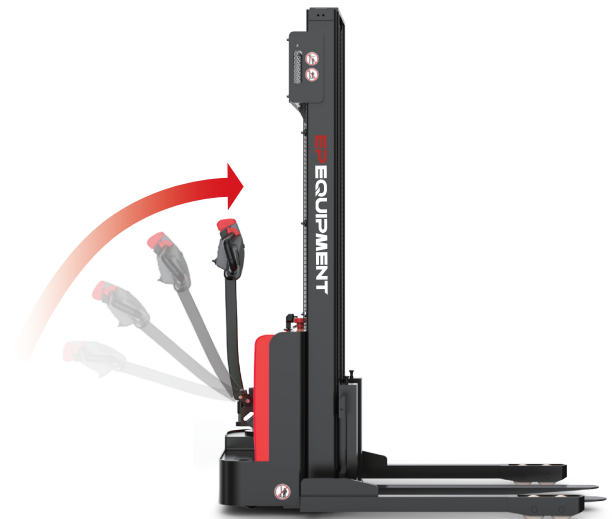
### ■ Strong chassis and rigid mast

The side impact beam, plates and boxes make the chassis stronger and can greatly reduce stress and deformation caused by heavy load. The rigidity of the mast is greatly improved by its beam structure to provide smooth lifting and stacking for daily operation.



### ■ Maintenance-free batteries with integrated charger

ESD122 comes with two 12V/85Ah AGM batteries and an integrated charger as standard. It's maintenance-free and no special charging room required, which brings users more efficient and flexible operation.



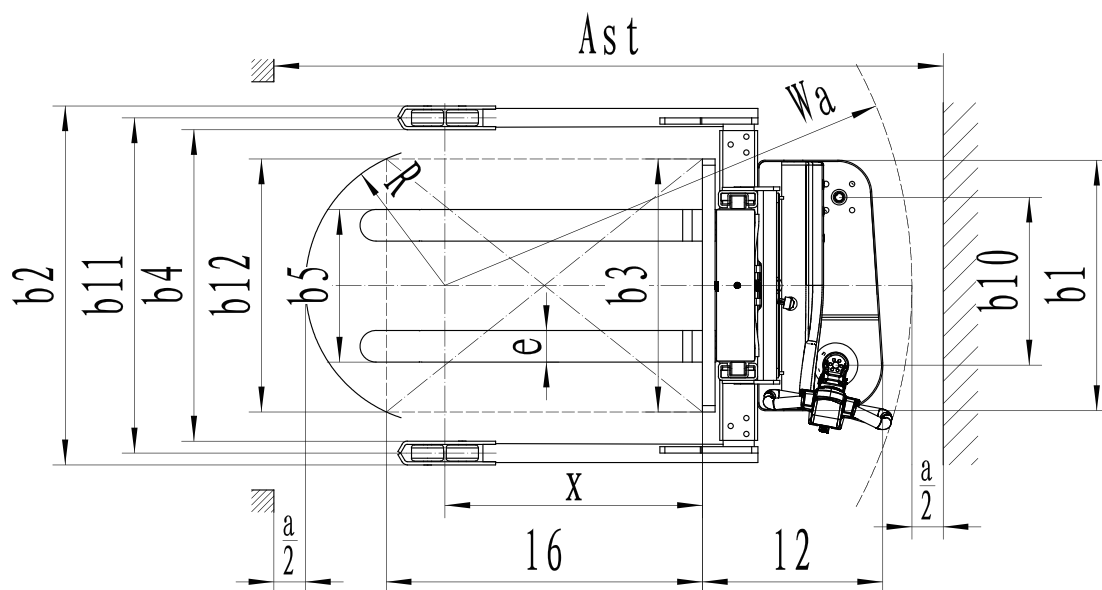
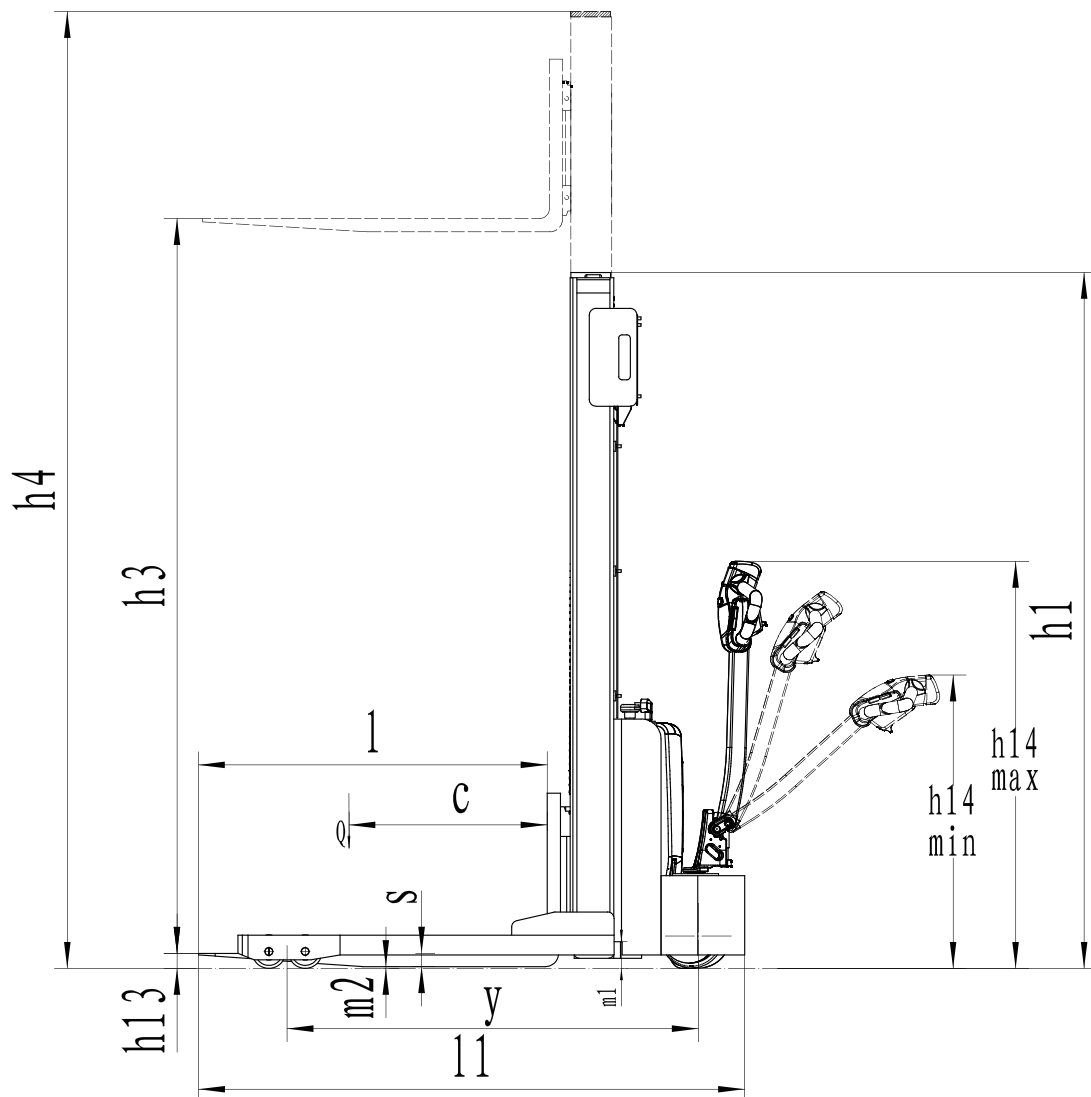
### ■ Easy operation

The extra-long and offset tiller with the crawl speed button provides ESD122 a better visibility and nimble maneuverability when operating in tight space.

# 1.2T Electric Wokie Straddle Stacker ESD122

Distinguishing mark	1.1	Manufacturer			EP
	1.2	Model designation			ESD122
	1.3	Drive			Electric
	1.4	Operator type			Pedestrian
	1.5	Load capacity	Q	kg	1200
	1.6	Load center distance	c	mm	600
	1.8	Load distance, centre of drive axle to fork	x	mm	815
	1.9	Wheelbase	y	mm	1245
	Service weight	2.1	Service weight		kg
2.2		Axle loading, laden front/rear		kg	683/1173
2.3		Axle loading, unladen front/rear		kg	443/193
Tyres/chassis	3.1	Tyre type			Polyurethane
	3.2	Tyre size, front		mm	Ø210×70
	3.3	Tyre size, rear		mm	Φ100x50
	3.4	Additional wheels (castor wheels)		mm	Φ100x50
	3.5	Wheels, number front/rear (x=drive wheels)		mm	1x, 1/4
	3.6	Tread width, front	b10	mm	531
	3.7	Tread width, rear	b11	mm	1060
Dimensions	4.0	Max. Lift Height	H	mm	2490
	4.2	Retracted mast height	h1	mm	1856
	4.3	Free lift	h2	mm	—
	4.4	Lift height	h3	mm	2430
	4.5	Height, mast extended	h4	mm	3071
	4.6	Initial lift	h5	mm	—
	4.9	Height of tiller handle in drive position min./max.	h14	mm	760/1140
	4.10	Height of wheel arms	h8	mm	100
	4.15	Lowered height	h13	mm	60
	4.19	Overall length	l1	mm	1653
	4.20	Length to face of forks	l2	mm	570
	4.21	Overall width	b1/b2	mm	1135/1235/ 1335
	4.22	Fork dimensions	s/e/l	mm	35/ 100/ 1070
	4.24	Fork carriage width	b3	mm	780
	4.25	Distance between fork-arms	b5	mm	200-760
	4.26	Distance between wheel arms/loading surfaces	b4	mm	985/1085/1185
	4.31	Ground clearance, laden, below mast	m1	mm	80
	4.32	Ground clearance, center of wheelbase	m2	mm	20
	4.34.1	Aisle width for pallets 1000×1200 crossways	Ast	mm	2305
4.34.2	Aisle width for pallets 800×1200 crossways	Ast	mm	2233	
4.35	Turning radius	Wa	mm	1477	
Performance data	5.1	Travel speed, laden/unladen		km/h	4.2/4.5
	5.2	Lifting speed, laden/unladen		m/s	0.10/0.14
	5.3	Lowering speed, laden/unladen		m/s	0.10/0.10
	5.8	Max. gradeability, laden/unladen		%	3/10
	5.10	Service brake			Electromagnetic
Electric-engine	6.1	Drive motor rating S2 60 min		kW	0.75
	6.2	Lift motor rating at S3 15%		kW	2.2
	6.4	Battery voltage/nominal capacity		V/Ah	2x12/85
	6.5	Battery weight		kg	2x24
	Addition data	8.1	Type of drive control		
10.5		Steering design			Mechanical
10.7		Sound pressure level at the driver's ear		dB(A)	74

If there are improvements of technical parameters or configurations, no further notice will be given.  
The diagram shown may contain non-standard configurations.



## Mast Option:

Mast types	Lift height h3+h13 (mm)	Height, mast lowered h1 (mm)	Free lift h2 (mm)	Height, mast extended h4 (mm)
2-Standard Mast	2490	1856	—	3071
	2690	1956	—	3271
	2990	2106	—	3571
	3290	2256	—	3871
	3590	2406	—	4171

## Option:

No.	Optional items	ESD122
1.1	Fork dimension	●1070○920○1150○1220
1.3	Fork lowered height	●60
2.1	Load wheel type	●Double
2.2	Load wheel material	●PU
2.3	Drive wheel material	●PU
2.7	Battery capacity	●85Ah
2.8	Charger	●24V-10A Internal
3.2	Fork carriage	●No○800
3.3	Castor wheels	●Yes and not customized
3.16	Vertical handler working	●Yes and not customized

Note: ●Standard ○ Optional - Inconformity

## Rated Capacity:

